



# ELLWOOD

YOUR METALS PARTNER, FROM MELT TO DISTRIBUTION

## 5083 ATP Cast Tool & Jig Aluminum Plate

### CHARACTERISTICS

ELLWOOD Specialty Metals - USA offers its customers cast tool and jig aluminum plates for applications requiring tight dimension control and flatness. The plates are produced from a fine-grain 5083 aluminum alloy which is free from internal stresses and makes the plates highly resistant to corrosion and distortion. Top and bottom surfaces are precision ground and protected with plastic film. Ready for use.

### ADVANTAGES

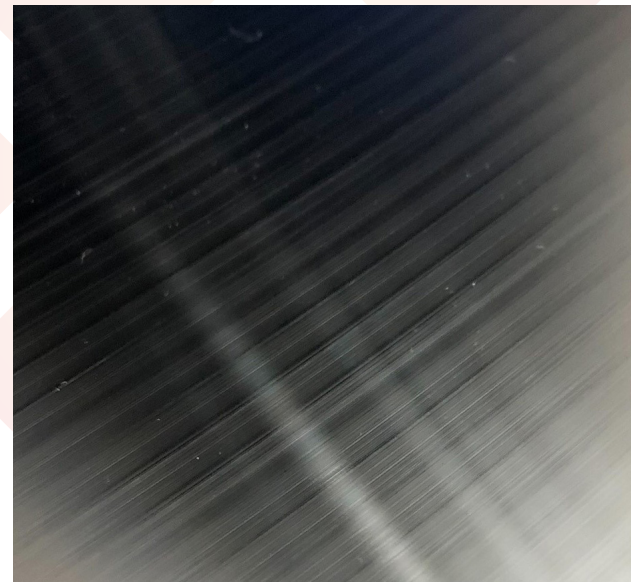
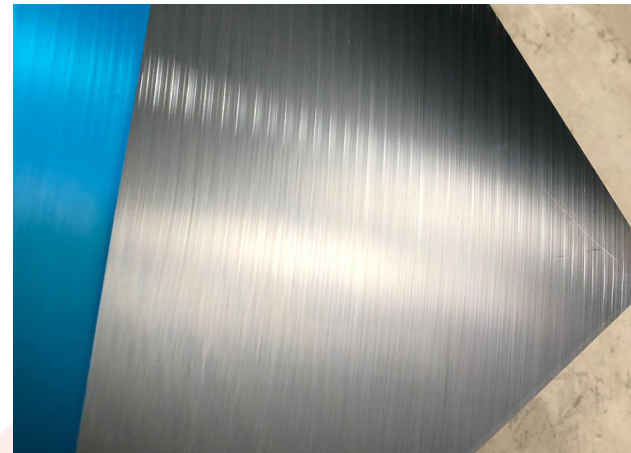
- Internally stable, which prevents movement during machining
- Consistent mechanical properties for entire thickness range
- Lightweight material that reduces the load on ways and screws
- Smooth surface ready for use
- Outstanding performance in high-speed cutting environments
- Acceptable for food contact
- Fully weldable
- Can be anodized

### QUALITY ASSURANCE

ELLWOOD Specialty Metals - USA is committed to supplying products and services that meet and exceed quality and performance expectations. We provide customer and technical services that ensure complete satisfaction. Our company establishes product programs to fully support industry or customer requirements.

### TYPICAL USES

- Welding Fixtures
- Vacuum Chucks
- Drill Jigs
- Templates & Gages
- Index Tables
- Automotive Tooling
- Aircraft Components
- Mounting Plates
- Foundry Patterns
- Food Machinery Components
- Packing Machinery
- CNC Routing Tables





# ELLWOOD

YOUR METALS PARTNER, FROM MELT TO DISTRIBUTION

## 5083 ATP Cast Tool & Jig Aluminum Plate

### 5083 ATP PROPERTIES

<b>Hardness</b>	70	Brinell
<b>Thickness</b>	1-5	in.
<b>Max Width</b>	85.5	in.
<b>Max Length</b>	157.5	in.
<b>Ultimate Tensile Strength</b>	23,900	psi
<b>Yield Tensile Strength</b>	15,200	psi
<b>Density</b>	0.101	lb/in <sup>3</sup>

Inquire with [ESM-USA-Sales@elwd.com](mailto:ESM-USA-Sales@elwd.com) for specific sizes.

